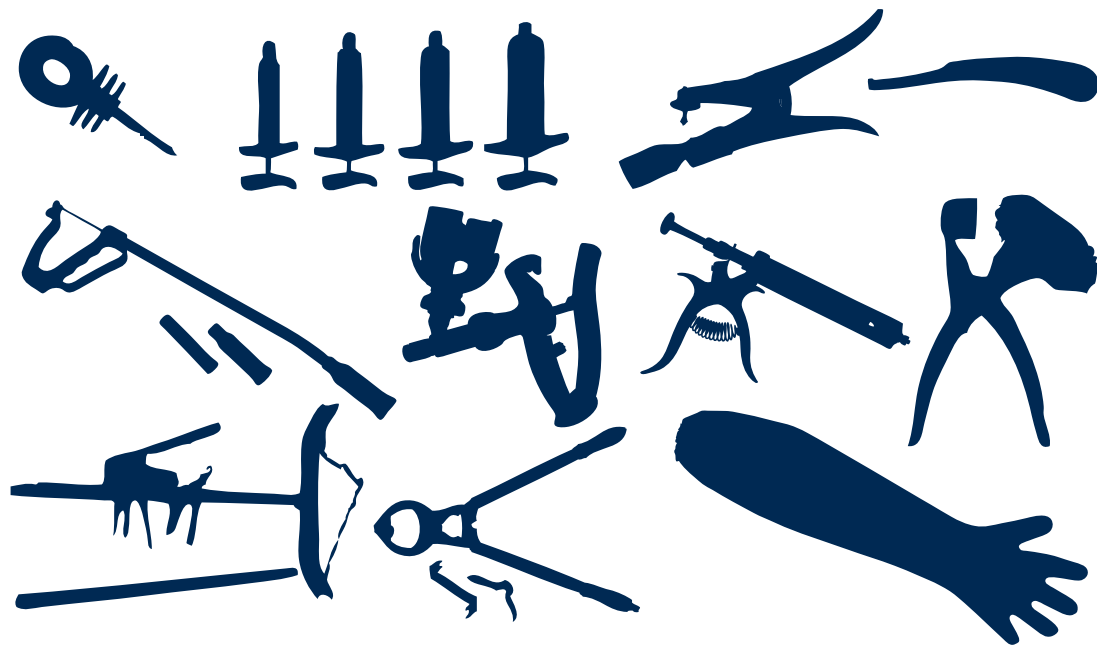




ZOOTECHNICAL CATALOGUE







-  **01. IDENTIFICATION**
-  **02. VETERINARY EQUIPMENT**
-  **03. LIVESTOCK EQUIPMENT**
-  **04. MILKING AND FEEDING**
-  **05. WEIGHTING AND MEASURING**
-  **06. ARTIFICIAL INSEMINATION**
-  **07. DRINKING SYSTEM**
-  **08. FENCING EQUIPMENT**



COMPACT ELECTRONIC
RFID READER "V8 BT"

01.01.4013



ELECTRONIC RFID READER
"PETSAN 250 BT"

01.01.4015



EAR TAG "TIP TOP" FOR SHEEP AND GOATS
WITHOUT NUMBER (50 PCS)

01.01.0080 - YELLOW

01.01.0081 - ORANGE

01.01.0082 - WHITE

01.01.0083 - GREEN

01.01.0084 - BLUE

01.01.0085 - RED



PERMANENT EAR TAG PEN "ZOOFLEX
MARKER" ROUND TIP - BLACK

01.01.1108



EAR TAG PEN "IABER MARKER"
ROUND TIP - BLACK

01.01.1006



EAR TAG PEN FINE TIP - BLACK

01.01.1008



EAR TAG PLIERS "IABTAG"
STANDARD - RED

01.01.1018



EAR TAG PLIERS "IABER"
HORIZONTAL

01.01.1020



EAR NOTCHER HORIZONTAL - ROUND HOLE
Ø 9 MM (7/20") SUPERIOR QUALITY

01.04.0143



EAR NOTCHER HORIZONTAL - ROUND HOLE
Ø 7 MM SUPERIOR QUALITY

01.04.0144

TO PIERCE THE ANIMAL'S EAR BEFORE
APPLYING THE EAR TAG

TO PIERCE THE ANIMAL'S EAR BEFORE
APPLYING THE EAR TAG



NYLON COLLAR FOR NUMBERS WITH PLASTIC
BUCKLE 1.30 CM - GREEN/WHITE

01.01.2330



PLASTIC COLLAR NUMBER YELLOW
(10 PCS)

01.01.2310 - "0"

01.01.2311 - "1"

01.01.2312 - "2"

01.01.2313 - "3"

01.01.2314 - "4"

01.01.2315 - "5"

01.01.2316 - "6"

01.01.2317 - "7"

01.01.2318 - "8"

01.01.2319 - "9"



PLASTIC COLLAR NUMBER "DUO"
REPLACEABLE (6 PCS)

01.01.2450 - "0" BLACK

01.01.2451 - "1" YELLOW

01.01.2452 - "2" ORANGE

01.01.2453 - "3" RED

01.01.2454 - "4" PURPLE

01.01.2455 - "5" BLUE

01.01.2456 - "6" GREEN

01.01.2457 - "7" GREY

01.01.2458 - "8" BROWN

01.01.2459 - "9" WHITE



RUBBER LEGBAND (10 PCS)

01.01.2550 - "0" BLACK

01.01.2551 - "1" YELLOW

01.01.2552 - "2" ORANGE

01.01.2553 - "3" RED

01.01.2554 - "4" PURPLE

01.01.2555 - "5" BLUE

01.01.2556 - "6" GREEN

01.01.2557 - "7" GREY

01.01.2558 - "8" BROWN

01.01.2559 - "9" WHITE



BLUE NYLON LEGBAND
FOR RUBBER NUMBERS

01.01.2560



METAL TATTOO PLIERS PLASTIC COVERED
BURDIZZO STYLE 4 DIGIT 10 MM (3/8")
+ 4 NUMBER SET

01.02.0002

AVAILABILITY OF LETTERS
AND NUMBERS



METAL TATTOO PLIERS - STANDARD MODEL
4 DIGITS 10 MM (3/8") + 4 SET OF NUMBERS

01.02.0011

AVAILABILITY OF LETTERS
AND NUMBERS



METAL TATTOO PLIERS - STANDARD MODEL
5 DIGITS 8 MM (5/16") + 5 SET OF NUMBERS

01.02.0015

AVAILABILITY OF LETTERS
AND NUMBERS



ROTARY TATTOO PLIERS
10 MM (3/8")

01.02.0034 - 4 DIGITS

01.02.0035 - 5 DIGITS



METAL TATTOO PLIERS TWO ROWS 10 DIGITS
8 MM (5/16") - WITHOUT NUMBERS

01.02.0041

AVAILABILITY OF LETTERS
AND NUMBERS



METAL TATTOO PLIERS "KETCHUM 101"
7 DIGITS 6 MM (1/5/64") - WITHOUT NUMBERS

01.02.0046

AVAILABILITY OF LETTERS
AND NUMBERS



RAIDEX TATTOOING PASTE TUBE 60 G

01.02.0511 - BLACK

01.02.0521 - GREEN



RAIDEX TATTOOING PASTE BOX 600 G

01.02.0512 - BLACK

01.02.0522 - GREEN



PECKER TATTOOING SPRAY INK
300ML BLACK

01.02.0514



RAIDEX TATTOOING INK
ROLL-ON BOTTLE 80 ML

01.02.0526 - BLACK

01.02.0527 - GREEN



KETCHUM TATTOOING PASTE TUBE
140 G GREEN

01.02.0540



KETCHUM TATTOOING PASTE BOX
643 G GREEN

01.02.0542



MARKING STICK
"RAIDEX" 57 G

01.03.0001 - RED
01.03.0002 - GREEN
01.03.0003 - BLUE
01.03.0004 - PURPLE
01.03.0005 - BLACK
01.03.0006 - ORANGE
01.03.0007 - YELLOW
01.03.0008 - WHITE



MARKING STICK
"ZOOMARC PLUS" 68 G

01.03.0031 - RED
01.03.0032 - GREEN
01.03.0033 - BLUE
01.03.0034 - PURPLE
01.03.0035 - BLACK
01.03.0036 - ORANGE
01.03.0037 - YELLOW



MARKING INK SPRAY "RAIDEX"
400 ML

01.03.0321 - RED
01.03.0322 - BLUE
01.03.0323 - GREEN
01.03.0324 - PURPLE
01.03.0326 - ORANGE
01.03.0327 - YELLOW



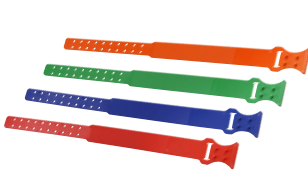
MARKING INK SPRAY
"RAIDEX" 500 ML

01.03.0341 - RED
01.03.0342 - BLUE
01.03.0343 - GREEN
01.03.0344 - PURPLE
01.03.0346 - ORANGE



MARKING INK SPRAY FOR SHEEP
"RAIDEX" 500 ML

01.03.0351 - RED
01.03.0352 - BLUE
01.03.0353 - GREEN
01.03.0355 - BLACK
01.03.0356 - ORANGE
01.03.0357 - YELLOW



PLASTIC COLLAR FOR SHEEP
55 CM

01.04.0022 - RED
01.04.0023 - BLUE
01.04.0024 - GREEN
01.04.0026 - ORANGE



COLLAR FOR SHEEP WITH REINFORCED
LEATHER 25 MM - 65 CM

01.04.0028 - BLUE
01.04.0029 - GREEN
01.04.0030 - YELLOW



FETLOCK STRAP - IABER

01.04.0045 - PINK
01.04.0046 - YELLOW
01.04.0047 - RED
01.04.0048 - BLUE
01.04.0049 - GREEN
01.04.0050 - ORANGE



VELCRO CATTLE LEGBAND
37 X 5 CM - IABER (5 PCS)

01.04.0071 - YELLOW
01.04.0072 - RED
01.04.0073 - BLUE
01.04.0074 - GREEN
01.04.0075 - ORANGE
01.04.0076 - PINK



EAR NOTCHER
V SHAPE

01.04.0101 - 15 CM - 6"
01.04.0111 - 18 CM - 7"



EAR NOTCHER
U SHAPE

01.04.0102 - 15 CM - 6"
01.04.0110 - 18 CM - 7"



EAR NOTCHER 15 CM (6") -
RECTANGULAR SHAPE

01.04.0103



EAR NOTCHER 15 CM (6")
M SHAPE

01.04.0105



EAR NOTCHER
ROUND HOLE

01.04.0107 - 15 CM 7 MM
01.04.0116 - 23 CM 14 MM



SYRINGE "SMART"
VETERINARY USE

02.01.2301 - 5 ML TRANSPARENT

02.01.2302 - 10 ML BLACK

02.01.2303 - 20 ML GREEN

02.01.2304 - 30 ML BLUE

02.01.2305 - 50 ML TRANSPARENT

02.01.2306 - 100 ML BLUE



DRENCHER "IMEX" WITH CANNULA -
VETERINARY USE

02.01.2013 - 250 ML

02.01.2016 - 400 ML



DRENCHER "IAMU" 400 ML WITH CANNULA -
VETERINARY USE

02.01.2019



DRENCHER "SMART" 100 ML WITH CANNULA
AND LUER-LOCK - VETERINARY USE

02.01.2006



DRENCHING GUN "GEMA" WITH CANNULA
12 CM - VETERINARY USE

02.01.3215 - 35 ML

02.01.3216 - 70 ML



SEMIAUTOMATIC DRENCHER "GUANFU"
300 ML

02.01.3225



DRENCHING GUN "GEMA" WITH CANNULA
20 CM - VETERINARY USE

02.01.3217 - 200 ML

02.01.3220 - 300 ML



DRENCHING GUN "IAPLAST" 50 ML
WITH CANNULA - VETERINARY USE

02.01.4185



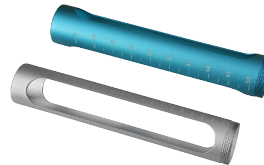
AUTOMATIC DRENCHER "SMARTDOSE" 30 ML
WITH CANNULA - VETERINARY USE

02.01.4220



SEMIAUTOMATIC SYRINGE
"HAUPTNER MUTO" 50 ML
VETERINARY USE

02.01.2905



SPARE ALUMINIUM CYLINDER
WITH BIG WINDOWS FOR
"HAUPTNER MUTO" SYRINGE

02.01.2820 - GREY

02.01.2823 - BLUE



SEMI AUTOMATIC SYRINGE "REVOLVERMATIK"
WITH ADJUSTABLE DOSE - VETERINARY USE

02.01.3001 - 10 ML

02.01.3002 - 25 ML

02.01.3003 - 50 ML



SEMIAUTOMATIC SYRINGE "EASYVAX METAL"
50 ML WITH METAL HANDLE AND TPX
CYLINDER - VETERINARY USE

02.01.2836



SEMIAUTOMATIC SYRINGE "STRONGVAX"
50 ML WITH UNBREAKABLE PLASTIC CYLINDER
- VETERINARY USE

02.01.2755

UNBREAKABLE PLASTIC CYLINDER
FOR "STRONGVAX" SYRINGE
(COMPATIBLE "MUTO")

02.01.8099



SEMIAUTOMATIC SYRINGE "SMARTVAX"
50 ML WITH UNBREAKABLE
PLASTIC CYLINDER - VETERINARY USE

02.01.7505

UNBREAKABLE PLASTIC CYLINDER
FOR "SMARTVAX" SYRINGE
(COMPATIBLE "ROUX")

02.01.7760



EXTENSION FOR SYRINGE

02.01.2888 - STRONGVAX

02.01.2890 - HAUPTNER MUTO



AUTOMATIC SYRINGE "ROTAMATIK"
WITH SELECTABLE DOSAGE AND BOTTLE
HOLDER WITH REPLACEABLE VALVE -
VETERINARY USE

02.01.4642 - 2 ML

02.01.4645 - 6 ML



AUTOMATIC SYRINGE "SMARTMATIK" WITH
BOTTLE HOLDER WITH REPLACEABLE VALVE -
VETERINARY USE

02.01.4442 - 2 ML

02.01.4445 - 5 ML



AUTOMATIC SYRINGE "SMARTMATIK"
WITH TUBE - VETERINARY USE

02.01.4402 - 2 ML

02.01.4405 - 5 ML



AUTOMATIC SYRINGE "SERENA" WITH TUBE
VETERINARY USE

02.01.3320 - 0,5 ML

02.01.3321 - 1 ML

02.01.3322 - 2 ML



AUTOMATIC SYRINGE "SERENA" WITH TUBE
- VETERINARY USE

02.01.3323 - 5 ML

02.01.3324 - 12 ML



AUTOMATIC SYRINGE "SERENA" WITH FRONT
BOTTLE HOLDER 0,5 ML - VETERINARY USE

02.01.3330 - 0,5 ML

02.01.3331 - 1 ML

02.01.3332 - 2 ML



AUTOMATIC SYRINGE "SERENA"
WITH REAR BOTTLE HOLDER - VETERINARY USE

02.01.3348 - 5 ML

02.01.3344 - 12 ML



AUTOMATIC SYRINGE "SERENA" 3 ML FOR
POULTRY SMALLPOX - VETERINARY USE

02.01.3350



AUTOMATIC DOUBLE SYRINGE "SERENA"
WITH TUBE 0,5ML - 0,5ML INDEPENDENT
ADJUSTMENT - VETERINARY USE

02.01.3301



AUTOMATIC SYRINGE "SOCOREX 187"
WITH TUBE - VETERINARY USE

02.01.3635 - 0,3 ML

02.01.3600 - 0,5 ML

02.01.3637 - 1 ML



AUTOMATIC DOUBLE SYRINGE
"SOCOREX 287" 0,5 - 0,5 ML WITH TUBE -
VETERINARY USE

02.01.3652



AUTOMATIC SYRINGE "SOCOREX 1810 ULTRA"
WITH TUBE - VETERINARY USE

02.01.4801 - 0,1 ML

02.01.4803 - 0,3 ML

02.01.4805 - 0,5 ML

02.01.4806 - 1 ML



FLEXIBLE EXTENSION TUBE FOR SYRINGE
LUER LOCK

02.01.2512



BACKPACK BOTTLE
2,5 L

02.01.5103



VETERINARY NEEDLE S.S. ROUND BASE
(12 PCS)

02.14.0706 - Ø 0,7 X 06 MM

02.14.0810 - Ø 0,8 X 10 MM

02.14.1010 - Ø 1,0 X 10 MM

02.14.1015 - Ø 1,0 X 15 MM

02.14.1020 - Ø 1,0 X 20 MM

02.14.1025 - Ø 1,0 X 25 MM

02.14.1210 - Ø 1,2 X 10 MM

02.14.1212 - Ø 1,2 X 12 MM

02.14.1215 - Ø 1,2 X 15 MM

02.14.1220 - Ø 1,2 X 20 MM

02.14.1225 - Ø 1,2 X 25 MM

02.14.1230 - Ø 1,2 X 30 MM

02.14.1240 - Ø 1,2 X 40 MM

02.14.1510 - Ø 1,5 X 10 MM

02.14.1512 - Ø 1,5 X 12 MM

02.14.1515 - Ø 1,5 X 15 MM

02.14.1520 - Ø 1,5 X 20 MM

02.14.1525 - Ø 1,5 X 25 MM

02.14.1530 - Ø 1,5 X 30 MM

02.14.1535 - Ø 1,5 X 35 MM

02.14.1540 - Ø 1,5 X 40 MM

02.14.1810 - Ø 1,8 X 10 MM

02.14.1812 - Ø 1,8 X 12 MM

02.14.1815 - Ø 1,8 X 15 MM

02.14.1820 - Ø 1,8 X 20 MM

02.14.1825 - Ø 1,8 X 25 MM

02.14.1830 - Ø 1,8 X 30 MM

02.14.1840 - Ø 1,8 X 40 MM

02.14.2010 - Ø 2,0 X 10 MM

02.14.2012 - Ø 2,0 X 12 MM

02.14.2015 - Ø 2,0 X 15 MM

02.14.2020 - Ø 2,0 X 20 MM

02.14.2040 - Ø 2,0 X 40 MM

02.14.2225 - Ø 2,2 X 25 MM

02.14.2230 - Ø 2,2 X 30 MM

02.14.2240 - Ø 2,2 X 40 MM

02.14.2425 - Ø 2,4 X 25 MM

02.14.2430 - Ø 2,4 X 30 MM

02.14.2440 - Ø 2,4 X 40 MM



VETERINARY DISPOSABLE HYPODERMIC
NEEDLES (100 PCS)

02.03.4510 - Ø 0,45 x 12 mm (26G x 1/2")

02.03.4515 - Ø 0,5 x 16 mm (25G x 5/8")

02.03.4520 - Ø 0,6 x 25 mm (23G x 1")

02.03.4525 - Ø 0,7 x 30 mm (22G x 1 1/4")

02.03.4530 - Ø 0,7 x 40 mm (22G x 1 1/2")

02.03.4541 - Ø 0,8 x 16 mm (21G x 5/8")

02.03.4545 - Ø 0,8 x 25 mm (21G x 1")

02.03.4550 - Ø 0,8 x 40 mm (21G x 1 1/2")

02.03.4570 - Ø 1,2 x 40 mm (18G x 1 1/2")

FOR POULTRY



VETERINARY NEEDLE "IABER ECO" S.S. SQUARED
BASE LL (12)

02.05.101B - Ø 1x10 mm - 19G x 3/8"

02.01.108B - Ø 0,8x10 mm - 21G x 3/8"

FOR FISH



VETERINARY NEEDLES "SOCOREX" S.S. SQUARED
BASE LL (12)

02.05.4035 - Ø 0,5x3 mm - 25G x 1/8"

02.05.6085 - Ø 0,6x8 mm - 23G x 1/8"

02.05.7135 - Ø 0,7x13 mm - 22G x 1/8"



FIXED SCALPEL HANDLE (SS)

02.02.0001 - No. 3

02.02.0002 - No. 4



FOLDING SCALPEL HANDLE (SS) - No. 4

02.02.0003



BÜHNER'S NEEDLE (SS)

02.02.0071 - 15,5 CM

02.02.0072 - 20 CM

02.02.0073 - 30 CM



NEEDLE HOLDER MATHIEU (SS)

02.02.0151 - 17 CM

02.02.0152 - 20 CM



DISSECTING FORCEPS 1X2 TEETH (SS)

02.02.0505 - 18 CM

02.02.0506 - 20 CM



ANATOMIC FORCEPS (SS)

02.02.0509 - 15 CM

02.02.0510 - 18 CM

02.02.0511 - 20 CM



KELLY HEMOSTATIC FORCEPS (SS) 18 CM - 7"

02.02.0520 - CURVED

02.02.0521 - STRAIGHT



KELLY/KOCHER HEMOSTATIC FORCEPS 1X2 TEETH (SS) 18 CM - 7"

02.02.0530 - CURVED

02.02.0531 - STRAIGHT



SURGICAL SCISSOR SHARP/BLUNT (SS) 18 CM - 7"

02.02.0555 - CURVED

02.02.0550 - STRAIGHT



SURGICAL SCISSOR BLUNT/BLUNT (SS) 18 CM - 7"

02.02.0556 - CURVED

02.02.0551 - STRAIGHT



HOLLOW WARE RECTANGULAR

02.02.0702 - 20 X 10 X 6 CM

02.02.0703 - 20 X 10 X 2 CM



BÜHNER'S VAGINAL TAPE

02.03.1350 - 5 M X 4 MM (INT Ø 2,5 MM)

02.03.1351 - 5 M X 7 MM (INT Ø 6,5 MM)



WOUND NEEDLE GALVANIZED 10 CM

02.06.0081



OBSTETRIC FORCEPS (SS) 52 CM - 20"

02.06.0210



OBSTETRIC HOOK (SS) 54 CM - 21"

02.06.0221



EYE HOOK 6,5 CM - 2,5"

02.06.0231 - BLUNT

02.06.0232 - SHARP



CALVING CHAIN WITH ADJUSTABLE HANDLES

02.06.0300



KREY-SCHOTTLER OBSTETRIC HOOK (SS) 20 CM - 8"

02.06.0304



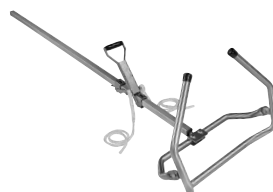
OB WIRE GUIDE 18 CM - 7"

02.06.0306



CALF PULLER "PAK"

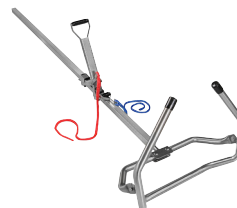
02.06.0320



CALF PULLER "VINK" 300 KG

02.06.0350 - 160 CM

02.06.0351 - 180 CM



CALF PULLER "VINK A800 BAYERN" 180 CM - 500 KG

02.06.0355



CALF PULLER "MU" 180 CM - 300 KG

02.06.0371



RUMINAL MAGNET - STRONG
IN PLASTIC CAGE 35 X 100 MM

02.07.0004 - GREEN

02.07.0005 - WHITE

02.07.0006 - WHITE (10 PCS)



RUMINAL MAGNET STRONG IN GREEN
PLASTIC CAGE 35 MM

02.07.0009 - (10 PCS)

02.07.0010



RUMINAL MAGNET "METALNEO" IN PLASTIC
CASE 85 X 20 MM

02.07.0221



RUMINAL MAGNET ROUND SHAPE
WITHOUT CAGE 80 X 20 MM

02.07.0231



RUMINAL MAGNET ROUND SHAPE
IN PLASTIC CAGE 100 X 35 MM

02.07.0232



RUMINAL MAGNET WITHOUT CAGE
60 X 20 MM (BOX OF 12 PCS)

02.07.0235



METAL MAGNET INTRODUCER
HEAD 35 MM

02.07.0011



METAL INTRODUCER FOR 35 MM BOLUS AND
MAGNETS - 70 CM WITH GREEN HANDLE

02.07.0013



LANCE BOLUS EN MÉTAL
AVEC POIGNÉE VERTE - BOUT Ø 35 MM

02.07.0030



PLASTIC BOLUS APPLICATOR
WITHOUT HANDLE

02.07.0025 - 30 CM HEAD Ø17x40 MM

02.07.0026 - 38 CM HEAD Ø26x80 MM



BOLUS APPLICATOR -SS- WITH METAL HANDLE
50 CM - THREE HEADS SET Ø 18-21-26 MM

02.07.0034



BOLUS APPLICATOR -SS- WITH PLASTIC HANDLE
AND TEFLON PUSHING ROD 50 CM

02.07.0035 - 50 CM - HEAD Ø 26 MM

02.07.0036 - 35 CM - HEAD Ø 21 MM



TROCAR WITH METAL HANDLE (SS)

02.07.0051 - 12 CM

02.07.0053 - 15 CM

02.07.0054 - 9 CM



CALF REBREATHING
BRON MODEL

02.07.0105



COW LIFTING FRAME "MU IABER" 1000 KG

03.01.0412



PIGLETS REBREATHING

02.07.0110



CUTIMETER SKIN TESTER
WITH "WATCH" SCREEN

02.08.0080



BULL HOLDER HARMS MODEL (SS)
19 CM - 7,5"

03.01.0002



BULL HOLDER WITH SPRING (SS)
13 CM - 5"

03.01.0005



BULL HOLDER LONG HANDLE
47 CM - 19"

03.01.0006



BULL HOLDER LOCKING HOOK & CHAIN (SS)
20 CM - 8"

03.01.0008



STANDARD BULL NOSE RING (SS)

03.01.0069 - 5 CM

03.01.0071 - 7 CM

03.01.0072 - 6 CM



BULL NOSE RING APPLICATOR

03.01.0085



PIG HOLDER WITH LONG METAL
HANDLE AND LOCK 60 CM - 24"

03.01.0100



PIG HOLDER - SMALL -
WITH HANDLE

03.01.0103



PIG HOLDER - SMALL -
WITH PLASTIC HANDLE

03.01.0113



FLAP FOR PIGS

03.01.0144



LONG PADDLE FOR PIGS

03.01.0145



PLASTIC SORTING PANEL
FOR PIGS - RED

03.01.0155 - 94 X 76 CM

03.01.0156 - 120 X 76 CM



PLASTIC SORTING PANEL FOR PIGS - SUPERIOR
QUALITY - GREEN 80 X 92 CM

03.01.0157



ELECTRIC PROD VOICED WITH BUTTON
("C" TYPE BATTERY - NOT INCLUDED)

03.01.0210 - 50 CM - 20"

03.01.0220 - 70 CM - 28"

03.01.0230 - 90 CM - 35"

03.01.0240 - 120 CM - 47"



ELECTRIC PROD IABER WITH REMOVABLE
AND RECHARGEABLE BATTERY 96 CM - FLEXIBLE
SHAFT 71 CM (MICRO-USB CABLE
NOT INCLUDED)

03.01.0318



ELECTRIC PROD WITH REMOVABLE AND
RECHARGEABLE BATTERY 84 CM - FLEXIBLE
SHAFT (CABLE INCLUDED)

03.01.0322 - 84 CM - 58 CM

03.01.0323 - 96 CM - 71 CM



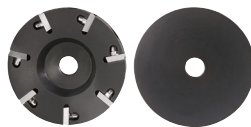
ELECTRIC PROD "A380" WITH BUTTON
AND RECHARGEABLE BATTERY 2200 MAH -
FLEXIBLE SHAFT 62 CM

03.01.0375



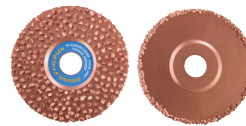
HOOF CUTTING DISK PROFESSIONAL "IABER"
6 BLADES 3 MM (4 SIDES) Ø 115 MM - 4,5"

03.02.0232



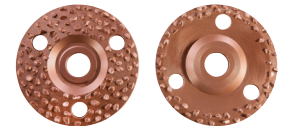
HOOF CUTTING DISK "IABER DL" 7 BLADES
(2 SIDES) Ø 100 MM - 4"

03.02.0236



ABRASIVE HOOF DISK "PHILIPSEN" DOUBLE
SIDE (GRAIN 30 FRONT - 10 REAR)
Ø 115 MM - 4,5"

03.02.0260



ABRASIVE HOOF DISK STANDARD DOUBLE
SIDES (COARSE GRAIN) Ø 115 MM - 4,5"

03.02.0268



ABRASIVE HOOF DISK "ZEC - SEMIFLEX"
SILICON CARBIDE (GRAIN 16) Ø 115 MM - 4,5"

03.02.0275



HOOF CUTTING DISK (2 SIDES)
Ø 120 MM - 4,7"

03.02.0243 - "3 CUT" 3 BLADES

03.02.0244 - "6 CUT" 6 BLADES



HOOK KNIFE WIDE BLADE
WOODEN HANDLE

03.02.0001 - RIGHT
03.02.0002 - LEFT
03.02.0003 - DOUBLE RIGHT
03.02.0004 - DOUBLE LEFT



HOOK KNIFE CURVED WIDE BLADE
LONG WOODEN HANDLE, "THE
KNIFE" MODEL

03.02.0010 - RIGHT
03.02.0011 - LEFT
03.02.0012 - DOUBLE



HOOK KNIFE NARROW BLADE
WOODEN HANDLE

03.02.0021 - RIGHT
03.02.0022 - LEFT
03.02.0024 - DOUBLE RIGHT
03.02.0025 - DOUBLE LEFT



HOOK KNIFE "AESFULAP" NARROW
BLADE WOODEN HANDLE

03.02.0015 - RIGHT
03.02.0016 - LEFT
03.02.0017 - DOUBLE



HOOK KNIFE "AESFULAP" WIDE BLADE
WOODEN HANDLE

03.02.0026 - RIGHT
03.02.0027 - LEFT
03.02.0028 - DOUBLE



HOOK KNIFE "ICAR" FIXED BLADE
WOODEN HANDLE

03.02.0035 - RIGHT
03.02.0036 - LEFT



HOOK KNIFE SMALL BLADE FOR SHEEP

03.02.0051



FOLDING HOOK KNIFE WOODEN
HANDLE 6 CM - 2,5"

03.02.0076



HOOK KNIFE "SUPERIOR" WIDE BLADE
WOODEN HANDLE

03.02.0031 - RIGHT
03.02.0032 - LEFT
03.02.0034 - DOUBLE RIGHT



HOOK KNIFE RING BLADE
WOODEN HANDLE

03.02.0050



HOOK KNIFE LOOP WIDE BLADE
WOODEN HANDLE

03.02.0052



HOOK KNIFE LOOP NARROW BLADE
WOODEN HANDLE

03.02.0054



HOOK KNIFE "COLOR-PRO" NARROW
BLADE WOODEN HANDLE

03.02.0040 - RIGHT
03.02.0041 - LEFT
03.02.0042 - DOUBLE RIGHT



HOOK KNIFE "SUPERIOR" NARROW
BLADE WOODEN HANDLE

03.02.0030 - RIGHT
03.02.0033 - LEFT



HOOK KNIFE BRUSH

03.02.0201



HOOF CHECKING PLIER STANDARD

03.02.0103



HOOF CHECKING PLIER SEMI-CIRCULAR

03.02.0105



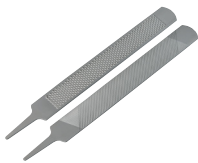
HOOF CHECKING PLIER CIRCULAR

03.02.0109



METAL HOOF GAUGE

03.02.0099



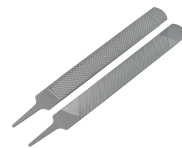
HORSE RASP (WITHOUT PLASTIC
HANDLE) 36 CM - 14"

03.02.0145



HORSE RASP WITH RED PLASTIC
HANDLE 36 CM - 14"

03.02.0149



HORSE RASP TOMÉ-FÊTEIRA SMARTCUT
(WITHOUT PLASTIC HANDLE) 36 CM - 14"

03.02.0161



HOOF PICK WITH BRUSH

03.02.0170



HOOF CUTTER BALZAC MODEL

03.02.0104



HOOF CUTTER DICK MODEL
42 CM - 17"

03.02.0100



HOOF NAIL CLINCH BLACK COATED
33 CM - 13"

03.02.0181



HOOF PLIERS BLACK COATED

03.02.0182 - 35 CM - 14"
03.02.0183 - 38 CM - 15"



HOOF PLEARS NICKEL COATED
38 CM - 15"

03.02.0118



FOOTROT SHEARS

03.02.0300 - PLAIN BLADE
03.02.0301 - SERRATED BLADE



TWO-COMPONENT GLUE FOR HOOF BLOCK "Podos" 200 ML TUBE

03.02.0402 - GLUE

03.02.0412 - MIXING TIP (10 PCS)

03.02.0419 - DOSING GUN



TWO-COMPONENT GLUE FOR HOOF BLOCK "Podos" FAST - 200 ML TUBE

03.02.0405



TWO-COMPONENT GLUE FOR HOOF BLOCK "Podos" - 200 ML TUBE- BAYONET FITTING

03.02.0406



WOODEN HOOF BLOCK (10 PCS)

03.02.0436



BLUE PLASTIC HOOF BLOCK SOFT 14 MM

03.02.0440



ORANGE PLASTIC HOOF BLOCK HARD 14 MM

03.02.0441



CLAW TAPE IN FABRIC "COROTEX" SINGLE-SIDED ADHESIVE BLACK 25 M X 50 MM

03.02.0462



CLAW TAPE IN FABRIC "CLAWTAPE" DOUBLE-SIDED ADHESIVE BLACK 25 M X 45 MM

03.02.0464



COHESIVE BANDAGE - 10 CM X 4,5 M - VETERINARY USE

03.02.0481 - RED

03.02.0482 - GREEN

03.02.0483 - BLUE

03.02.0484 - DARK BLUE

03.02.0485 - BLACK

03.02.0486 - PINK

03.02.0487 - YELLOW



COHESIVE BANDAGE WITH PAWS 5 CM X 4,5 M - VETERINARY USE

03.02.0636 - PINK

03.02.0639 - BLUE

03.02.0640 - YELLOW



CASTRATING RUBBER RINGS APPLICATOR

03.03.0001



CASTRATING RUBBER RINGS - ORANGE (100 PCS)

03.03.0003



CASTRATION FORCEPS FOR LAMB 23 CM

03.03.0120



CASTRATION FORCEPS BURDIZZO MODEL 48 CM - 19"

03.03.0171 - "KAMER"

03.03.0175 - "CHIFA"



VERBOCHY-WHITES EMASCULATOR

03.03.0201 - 23 CM - 9"

03.03.0203 - 27 CM - 10,5"



REIMERS EMASCULATOR 31 CM - 12"

03.03.0212



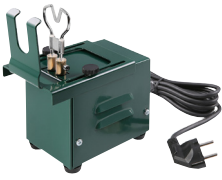
DEHORNING WIRE SAW HANDLE (2 PCS)

03.04.0011



DEHORNING WIRE SAW IN PLASTIC BOX 12 M

03.04.0015



TAIL DOCKER WITH TRANSFORMER

03.05.0200



HOT TAIL CUTTER "ENGEL"

03.05.0210 - STANDARD BLADE
03.05.0211 - V-BLADE



GAS TAIL DOCKER

03.05.0245



CATTLE HOBBLE REINFORCED NYLON BELT

03.05.0272



PLASTIC FEED SCOOP 37 CM - 14"

03.05.0299



ALUMINIUM FEED SCOOP

03.05.0301 - SMALL 27 CM

03.05.0302 - MEDIUM 32 CM

03.05.0303 - BIG 37 CM



INFRARED RED LAMP REINFORCED GLASS (E27 CONNECTION) 220 V

03.05.1268 - 175 W

03.05.1269 - 250 W



INFRARED CERAMIC HEATER WITHOUT LIGHT, FLATTED SHAPED (E27 CONNECTION) 220 V

03.05.1287 - PLAT 250 W

03.05.1293 - CÔNE 150 W



INFRARED LAMP/HEATER HOLDER WITH SWITCHER - 2,5 M CABLE

03.05.1310

SIZE: Ø 21,5x32 cm
MAX POWER: 275 W
VOLTAGE: 220 V
FREQUENCY: 50 Hz
LAMP BASE: E27



CALF COAT IN PU 72 CM

03.05.1940



CALF COAT "RIBSTOP600" 72 CM

03.05.1942



TOOTH NIPPERS FOR PIGS 13 CM - 5"

03.05.0001



EQUINE DENTAL FLOAT RASP

03.07.0110



NATURAL HIMALAYAN SALT LICK FOR ANIMALS

13.01.0100



SHEEP SHEAR 29 CM BLACK HANDLE BLADE 14,5 CM

03.06.0174



SHEEP SHEAR RED HANDLE

03.06.0175 - 29 CM LAME 14,5 CM

03.06.0176 - 34 CM LAME 16,5 CM



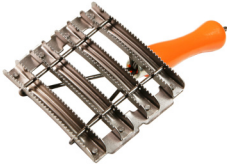
MANUAL SHEAR CLIPPER (SHORT HAIR)

03.06.0180



ROUND METAL CURRYCOMB FINE-TOOTHED WITH PLASTIC HANDLE

03.06.0402



METAL CURRYCOMB 8 ROWS WITH MANE COMB AND WOODEN HANDLE

03.06.0406



METAL CURRYCOMB 8 ROWS WITH WOVEN HAND LOOP

03.06.0407



OVAL PLASTIC CURRYCOMB FINE-TOOTHED WITH ADJUSTABLE HAND LOOP

03.06.0408



RUBBER OVAL CURRYCOMB WITH HAND LOOP

03.06.0409



ALUMINIUM MANE COMB

03.06.0416



BRUSH FOR HORSES WITH HARD BRISTLES AND WOODEN HANDLE

03.06.0422 - 21,7X6 CM YELLOW

03.06.0423 - 24,7X6 CM BLUE

03.06.0424 - 20X6,5 CM RED



OVAL METAL CURRYCOMB WITH WOVEN HANDLE

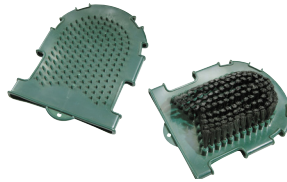
03.06.0431

03.LIVESTOCK EQUIPMENT



RUBBER GLOVE CURRYCOMB
DOUBLE SIDES

03.06.0432



RUBBER GLOVE CURRYCOMB
WITH BRUSH

03.06.0435



RUBBER GLOVE CURRYCOMB
WITH MAGNETIC BALLS FOR MASSAGE

03.06.0436



PLASTIC SWEAT SCRAPER HALF-ROUNDED
FOR HORSES WITH COMB

03.06.0450



METAL SWEAT SCRAPER HALF-ROUNDED
FOR HORSE WITH WOODEN HANDLE

03.06.0453

04.MILKING AND FEEDING



PRE-MILKING CUP FOR MASTITIS TEST
1 LT BLUE

04.01.0001



PRE-MILKING LONG CUP FOR MASTITIS TEST
BLUE - WITH BELT CLIPS

04.01.0008



PRE MILKING PADDLE
FOR MASTITIS TEST WHITE

04.01.0002



LIQUID FOR MASTITIS TEST CMT RAIDEX -
PURPLE 1 L

04.01.0075



TEAT SLITTER DOUBLE BLADE
"DANISH MODEL" 14 CM

04.01.0014



DISPOSABLE PLASTIC TEAT DILATOR
(10 PCS)

04.01.0020



DISPOSABLE WOOLEN TEAT DILATOR
WITH OINTMENT (20 PCS)

04.01.0021



UDDER CATHETER LUER LOCK
(12 PCS)

04.01.0035 - 6 CM

04.01.0036 - 8 CM



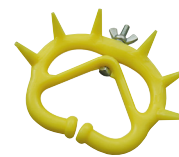
TEAT TUMOR EXTRACTOR
"HUG MODEL" 16 CM

04.01.0012



UDDER CARE CREAM "CRYOMENTHA 36"
WITH 36% JAPANESE MINT - 500 ML

04.01.0502



PLASTIC ADJUSTABLE CALF WEANER
WITH SPIKE YELLOW

04.03.0004



FOAMER DIP CUP
UPPER FILTER "TECNOLATTE"

04.01.0130



NON-RETURN DIP CUP
"TECNOLATTE" GREEN

04.01.0106



NON-RETURN DIP CUP RED
WITH BRUSH

04.01.0116



DIPPING CUP "AMBIC"
NON RETURN

04.01.0113



DIPPING CUP
"MABIC MULTIFOAMER"

04.01.0114



CALF BUCKET WITH RED RUBBER TEAT, VALVE AND BACK HOLDER
8 L

04.02.0001



LAMB BUCKET 5 POSITIONS WITH RED RUBBER TEATS, VALVES AND BACK HOLDER
8 L

04.02.0070



CALF BUCKET HANGING MODEL WITH BLACK TEAT, WITHOUT VALVE
4 L

04.02.0016



CALF BUCKET HANGING MODEL WITH BLACK TEAT WITH TWO OPENINGS (WITHOUT VALVE) - 3 L

04.02.0018



MULTIPLE CALF BUCKET (UP TO 5 CALVES) WITH BLACK TEATS WITH TWO OPENINGS (WITHOUT VALVE)

04.02.0026



MULTIPLE CALF BUCKET (UP TO 3 CALVES) WITH BLACK TEATS WITH TWO OPENINGS (WITHOUT VALVE)

04.02.0025



FEEDING BOTTLE FOR CALF WITH LARGE BOTTLE OPENING 2,5 L WITH VALVE AND TEAT WITH TWO OPENINGS

04.02.0197 - 2,5 L

04.02.0198 - 4 L



FEEDING BOTTLE FOR CALF WITH LARGE BOTTLE OPENING 2,5 L WITH VALVE AND PLASTIC FEEDING CANNULA

04.02.0385 - 2,5 L

04.02.0386 - 4 L



FEEDING BOTTLE FOR CALF 2,5 L WITH RED HANDLE

04.02.0207



FEEDING BOTTLE FOR CALF WITH BACK HANDLE 4 L WITH METAL TUBE (HARD) AND PLASTIC TUBE (SOFT)

04.02.0382



FEEDING BOTTLE FOR CALF WITH SMALL BOTTLE OPENING 2,5 L WITH VALVE AND RED RUBBER TEAT

04.02.0352



FEEDING BOTTLE FOR CALF WITH SMALL BOTTLE OPENING 2,5 L WITH VALVE AND PLASTIC FEEDING CANNULA

04.02.0350



FEEDING BOTTLE FOR LAMB
1 L

04.02.0206



TEAT FOR SMALL SHEEP AND GOATS WITH SCREW ADAPTER FOR PET BOTTLE (5 PCS)

04.02.0228



REUSABLE BAG WITH TUBE FOR COLOSTRUM
2,5 L

04.02.0481



ALUMINIUM BAG FOR COLOSTRUM 4 L - FREEZING, HEATING AND ADMINISTRATION (5 PCS)

04.02.0412



PORTABLE OPTICAL REFRACTOMETER BRIX SCALE (0-32%) FOR COLOSTRUM

04.02.0523



PORTABLE DIGITAL REFRACTOMETER BRIX SCALE (0-50%) FOR COLOSTRUM

04.02.0551



QUARTER MILKER

04.04.1930



MILK FILTER SOCK SEWN - TECNOLATTE PREMIUM

04.04.1031 - 60x320 MM (200 PCS)

04.04.1033 - 60x620 MM (200 PCS)

04.04.1051 - 60x320 MM (100 PCS)

04.04.1053 - 60x620 MM (100 PCS)

04.04.1056 - 60x450 MM (100 PCS)



OILER FOR VACUUM PUMP

04.04.5820



UNIVERSAL OILER FOR GPV

04.04.5822 - 1500

04.04.5823 - 500/750/1000



PNEUMATIC PULSATOR TECNOLATTE P180 2 EXIT 60/40 GREEN METAL COVER SUPERIOR QUALITY

04.04.0516



PNEUMATIC PULSATOR TECNOLATTE P380 2 EXIT 60/40 RED METAL COVER

04.04.0525



S/S MILKING CLAW 300CC
IN POLYSULPHONE WITH VALVE

04.04.0356



S/S HARMONY MILKING CLAW STYLE
360CC IN POLYSULPHONE

04.04.0357



PLASTIC MILKING CLAW 150CC
IN POLYSULPHONE WITH VALVE

04.04.0365



PLASTIC PRESSURE SPRAYER WITH
QUICK COUPLING AND REGULATION

04.04.2580



METAL PRESSURE SPRAYER WITH QUICK
COUPLING AND REGULATION

04.04.2581



METAL/PLASTIC SPRAY SHOWER PREMIUM
WITH QUICK COUPLING AND REGULATION

04.04.2584



PVC
MILKING APRON

04.05.0010 - 115 X 100 CM

04.05.0011 - 125 X 118 CM



PVC MILKING APRON
WITH FRONTAL POCKET

04.05.0013 - 110 X 118 CM

04.05.0014 - 125 X 118 CM



PU "IABER"
MILKING APRON

04.05.0041 - 120 X 80 CM

04.05.0042 - 125 X 100 CM



PVC "IABER" MILKING APRON
WITH FRONTAL POCKET

04.05.0064 - 120 X 80 CM

04.05.0065 - 125 X 100 CM



PU MILKING APRON
"FARMTRAK"

04.05.0081 - 109 CM

04.05.0082 - 122 CM



WATERPROOF PU LONG SLEEVES JACKET
AND TROUSERS - BLUE

04.05.0122 - L

04.05.0123 - XL



WATERPROOF PU LONG SLEEVES JACKET
WITH HOOD AND TROUSERS - GREEN

04.05.0132 - L

04.05.0133 - XL



WATERPROOF PU SHORT
SLEEVES JACKET - BLUE

04.05.0142 - L

04.05.0143 - XL



WATERPROOF PU LONG SLEEVES JACKET
WITH HOOD AND TROUSERS - GREEN

04.05.0162 - L

04.05.0163 - XL



WATERPROOF PU LONG SLEEVES JACKET
AND TROUSERS - BLUE

04.05.0172 - L

04.05.0173 - XL



DISPOSABLE MILKING PROTECTIVE
SLEEVES IN PE (100 PCS)

04.05.0512



MILKING PROTECTIVE SLEEVES IN OXFORD
POLYESTER WITH ELASTICS (PAIR)

04.05.0513



MILKING PROTECTIVE SLEEVES IN PVC
WITH ELASTICS (PAIR)

04.05.0514



MILKING PROTECTIVE SLEEVES SOFTSHELL
WITH THUMB HOLE (PAIR)

04.05.0520



MILKING PROTECTIVE SLEEVES IN PVC
WITH ELASTICS (PAIR)

04.05.0522

SPARE PARTS AVAILABLE

05. WEIGHTING AND MEASURING



DIAL MECHANICAL METAL BODY HANGING SCALE

05.01.1033 - 25 KG (± 0,1 KG)

05.01.1034 - 50 KG (± 0,2 KG)

05.01.1035 - 100 KG (± 0,5 KG)

05.01.1037 - 200 KG (± 1 KG)



COPPER HANGING SCALE

05.01.1103 - 50 KG (± 1 KG)

05.01.1104 - 100 KG (± 2 KG)



DIGITAL HANGING SCALE BACKLIGHT 50 KG (± 0,01 KG)

05.01.1231



DIGITAL HANGING SCALE BACKLIGHT

05.01.1251 - 200 KG (± 0,01 KG)

05.01.1272 - 300 KG (± 0,01 KG)



DIGITAL HANGING SCALE "ELECTROSAMOSON SALTER" 25 KG (± 0,02 KG)

05.01.1302



CALF WEIGHING HARNESS FOR PORTABLE SCALE (UP TO 80 KG)

05.01.1295



POCKET DIGITAL SCALE 200 G (± 1 G)

05.01.1333



DIGITAL PROBE FOOD THERMOMETER (FROM -50 °C TO +300 °C)

05.01.2011



MILK THERMOMETER WITH PLASTIC PROTECTION (FROM -10 °C TO +110 °C)

05.01.2013



RAIN GAUGE 30 CM RIGID PLASTIC WITH TIP - 120 ML

05.01.3012

06. ARTIFICIAL INSEMINATION



UNIVERSAL SHEATH "BOVIGAINÉ" FOR BOVINE ARTIFICIAL INSEMINATION SPLIT (50 PCS)

06.01.0008



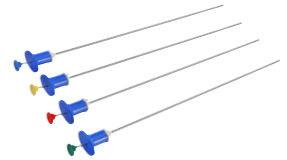
UNIVERSAL SHEATH "BOVIGAINÉ" FOR BOVINE ARTIFICIAL INSEMINATION - UNSPLIT (50 PCS)

06.01.0037



UNIVERSAL A.I. GUN "QUICKLOCK ERGO" LONG MODEL

06.01.0026



UNIVERSAL GUN "QUICKLOCK CLASSIC" FOR ARTIFICIAL INSEMINATION

06.01.0078 - BLUE

06.01.0079 - YELLOW

06.01.0080 - RED

06.01.0081 - GREEN

06.01.0027 - WHITE



HEATER FOR A.I. GUN "QUICKLOCK HEATER 4.0"

06.01.0095



ARTIFICIAL INSEMINATION SLEEVE "CRYOFARM" (80 PCS)

06.02.0017



AI PLASTIC TWEEZERS

06.01.0420 - 0,25 ML

06.01.0421 - 0,5 ML



STRAW CUTTER "MINICUTTER"

06.01.0405



STRAW CUTTER "CITO"

06.01.0406



PLASTIC STRAW CUTTER

06.01.0404



SEMEN THAW "CITO" 12-2020 V

06.01.0735



HEAT DETECTION PATCH "BOVIFLAG" (50 PCS)

06.01.0552 - RED

06.01.0553 - YELLOW

06.01.0554 - GREEN

06.01.0555 - PURPLE

06.01.0556 - BLUE



MARKING CRAYON IN CARTON STICK FOR HEAT DETECTION 57 G (10)

06.01.0511 - RED

06.01.0512 - GREEN

06.01.0513 - BLUE

06.01.0514 - ORANGE



TAIL PAINT FOR HEAT DETECTION "BOVIPAINT"

06.01.0542 - RED

06.01.0543 - YELLOW

06.01.0544 - GREEN



MATING IDENTIFICATION HARNESS FOR EWES AND SWINES (WITHOUT WAX BLOCK)

06.03.0501



WAX BLOCK FOR MATING IDENTIFICATION HARNESS

06.03.0510 - RED

06.03.0511 - BLUE

06.03.0512 - GREEN

06.03.0513 - YELLOW

06.03.0514 - ORANGE

06.03.0515 - BLACK



ALLIS FORCEPS 25 CM - 10"

06.03.0011



VAGINAL SPECULUM 20 CM

06.03.0012



DISPOSABLE ARM LENGTH GLOVES ORANGE SOFTGLOVE (100 PCS)

06.04.0100



DISPOSABLE ARM LENGTH GLOVES NECK (50 PCS)

06.04.0102



DISPOSABLE ARM LENGTH GLOVES "GLOVETOP" WITH SHOULDER PROTECTION (50 PCS)

06.04.0202



DISPOSABLE ARM LENGTH GLOVES "GLOVELAST" WITH ELASTIC BAND (50 PCS)

06.04.0203



DISPOSABLE ARM LENGTH GLOVES "GLOVEBAND" 90 CM WITH FIXING BAND (100 PCS)

06.04.0204



DISPOSABLE ARM LENGTH GLOVES "GLOVEMAX 90" (100 PCS)

06.04.1117



NITRILE GLOVES "IABER" 3 MIL (100 PCS)

06.04.1201 - S

06.04.1202 - M

06.04.1203 - L

06.04.1204 - XL



NITRILE GLOVES "IABER" 4 MIL POWDER FREE (100 PCS)

06.04.1241 - S

06.04.1242 - M

06.04.1243 - L

06.04.1244 - XL

06.04.1245 - XXL



VINYL GLOVES "IABER" (100 PCS)

06.04.1301 - S

06.04.1302 - M

06.04.1303 - L

06.04.1304 - XL



DISPOSABLE BOOT COVER WITH ELASTIC BAND - ZOOTECHNICAL USE

06.04.1504 - 10 PCS

06.04.1505 - 50 PCS



DISPOSABLE BOOT COVER WITH LACE TO TIDE - ZOOTECHNICAL USE (50 PCS)

06.04.1508



DISPOSABLE POLYETHYLENE OVER COAT WITH LACE TO TIDE AND LONG SLEEVES - ZOOTECHNICAL USE

06.04.1520

06.04.1530 - 10 PCS



DISPOSABLE OVER COAT FULL-BODY 135 CM WITH LONG SLEEVES - ZOOTECHNICAL USE (20 PCS)

06.04.1535



INSEMINATION GEL "RAIDEX" 1 L

06.04.5002



GEL "RAIDEX" FOR ULTRASOUND SCAN AND RECTAL AND VAGINAL EXAMINATION 1 L

06.04.5005



BITE NIPPLE DRINKER FOR PIGLETS
(WITH RED FILTER) - 5,5 CM x 1/2" (5 PCS)

- 07.01.0241 - INOX 201
- 07.01.0291 - INOX 304



BITE NIPPLE DRINKER FOR PIGS
(WITH RED FILTER) - 6,5 CM x 1/2" (5 PCS)

- 07.01.0243 - INOX 201
- 07.01.0293 - INOX 304



BITE NIPPLE DRINKER FOR SOWS
(WITH RED FILTER) - 8,5 CM x 1/2" (5 PCS)

- 07.01.0245 - INOX 201
- 07.01.0295 - INOX 304



NIPPLE DRINKER (WITH RED FILTER)
8 MM x 1/2" (5 PCS)

- 07.01.0272 - INOX 201
- 07.01.0302 - INOX 304



SPRAY NIPPLE (WITH RED FILTER)
1/2" (5 PCS)

- 07.01.0276 - INOX 201
- 07.01.0306 - INOX 304



ANTIFREEZE HEATING CABLE
WITH THERMOSTAT

- 07.07.0585 - 2 M
- 07.07.0586 - 4 M



POULTRY DRINKER BUCKET
5,5 L

- 07.04.0335



FLOW WATERER FOR CHICKS
FOR PLASTIC BOTTLE

- 07.04.0321



PLASTIC POULTRY
DRINKER

- 07.04.0322 - 1,5 L
- 07.04.0323 - 3 L
- 07.04.0324 - 5 L
- 07.04.0325 - 10 L



PLASTIC POULTRY DRINKER WITH FILLING CAP,
LEGS AND HANDLE

- 07.04.0327 - 5 L
- 07.04.0328 - 10 L
- 07.04.0329 - 15 L



PLASTIC POULTRY DRINKER WITH CAP
WITH HANDLE AND LEGS

- 07.04.0340 - 15 L



PLASTIC POULTRY DRINKER WITH CAP
WITH HANDLE AND TRIPOD

- 07.04.0341 - 24 L



PLASTIC POULTRY FEEDER WITH
THREADED BAR FOR ADJUSTMENT,
ANTI-WASTE FINS AND LEGS

- 07.04.0420 - 9 L
- 07.04.0421 - 20 L



PLASTIC FEED TROUGH WITH GRID

- 07.04.0425 - 50x7x8 CM - CHICKS
- 07.04.0426 - 50x15x13 CM - CHICKENS
- 07.04.0427 - 100x15x13 CM - CHICKENS



PLASTIC POULTRY FEEDER "IABER AIE"
WITH HANDLE

- 07.06.0071 - 1,5 KG
- 07.06.0073 - 3 KG
- 07.06.0076 - 6 KG
- 07.06.0079 - 9 KG



PLASTIC POULTRY DRINKER "ECHO"
WITH HANDLE

- 07.04.0351 - 1,5 L
- 07.04.0352 - 3 L
- 07.04.0353 - 6 L



PLASTIC POULTRY DRINKER "ECHO"
WITH HANDLE AND LEGS

- 07.04.0361 - 1,5 L
- 07.04.0364 - 8 L



PLASTIC POULTRY FEEDER "ECHO"
WITH HANDLE

- 07.04.0451 - 1,5 KG
- 07.04.0452 - 3 KG
- 07.04.0453 - 6 KG



PLASTIC POULTRY FEEDER "ECHO"
WITH HANDLE AND LEGS

- 07.04.0464 - 5 KG



PLASTIC POULTRY DRINKER "IABER AIE"
WITH HANDLE

- 07.06.0021 - 1,5 LT
- 07.06.0024 - 4 LT
- 07.06.0026 - 6 LT
- 07.06.0030 - 10 LT



BLACK RING INSULATOR WITH SCREW - REINFORCED WITH METAL CORE STANDARD (25 PCS)

08.04.0001



BLACK RING INSULATOR WITH SCREW - REINFORCED WITH METAL CORE BIG (25 PCS)

08.04.0010



BLACK INSULATOR FOR ROPE AND TAPE 4 CM (25 PCS)

08.04.0015



BLACK INSULATOR "W TYPE" FOR ROPE (25 PCS)

08.04.0028



BLACK STRAIN INSULATOR FOR ROPE (25 PCS)

08.04.0029



WHITE STRAIN INSULATOR FOR ROPE SUPERIOR QUALITY (10 PCS)

08.04.0030



ROTATING CORNER INSULATOR FOR ROPE (10 PCS)

08.04.0033



TWO-WAY GATE INSULATOR WITH SCREW (10 PCS)

08.04.0035



INSULATING GATE HANDLE WITH HOOK AND INNER SPRING

08.04.0052



POLYWIRE FOR ELECTRIC FENCE Ø 2 MM - 3 X 0,16 MM SS WIRES

08.04.1310 - 250 M

08.04.1311 - 500 M



POLYWIRE FOR ELECTRIC FENCE Ø 2 MM - 6 X 0,16 MM SS WIRES

08.04.1320 - 250 M

08.04.1321 - 500 M



POLYWIRE FOR ELECTRIC FENCE Ø 2,5 MM - 3 X 0,2 MM SS WIRES

08.04.1330 - 250 M

08.04.1331 - 500 M



POLYWIRE FOR ELECTRIC FENCE Ø 2,5 MM - 6 X 0,2 MM SS WIRES

08.04.1340 - 250 M

08.04.1341 - 500 M



POLYWIRE FOR ELECTRIC FENCE Ø 2,5 MM 2 X 0,2 MM SS WIRES + 1 X 0,25 MM CU WIRE

08.04.1370 - 250 M

08.04.1371 - 500 M



POLYTAPE FOR ELECTRIC FENCE 200 M - SS WIRES

08.04.1734 - 10 MM - 4 X 0,16 MM

08.04.1737 - 20 MM - 4 X 0,16 MM

08.04.1739 - 40 MM - 8 X 0,16 MM



FIBERGLASS POST WITH METAL GROUND NAIL (5 PCS)

08.04.2002 - 110 CM

08.04.2003 - 140 CM



FIBERGLASS POST WITH HARD PLASTIC GROUND NAIL (5 PCS)

08.04.2005 - 110 CM



PLASTIC POST WITH METAL GROUND NAIL (5 PCS)

08.04.2024 - 104 CM



PLASTIC POST WITH METAL GROUND NAIL (5 PCS)

08.04.2026 - 110 CM



PLASTIC POST WITH METAL GROUND NAIL (5 PCS)

08.04.2028 - 120 CM



METAL ROPE STRETCHER (10 PCS)

08.05.0200



FENCING PLIERS RED HANDLE (CHROME VANADIUM STEEL)

08.05.0305





Distributed by:
CRYOFARM S.r.l.
Via Snos, n. 1
12038 SAVIGLIANO (CN)
Tel. +39 0172 725727
info@cryofarm.com

www.cryofarm.com
www.iaber.it